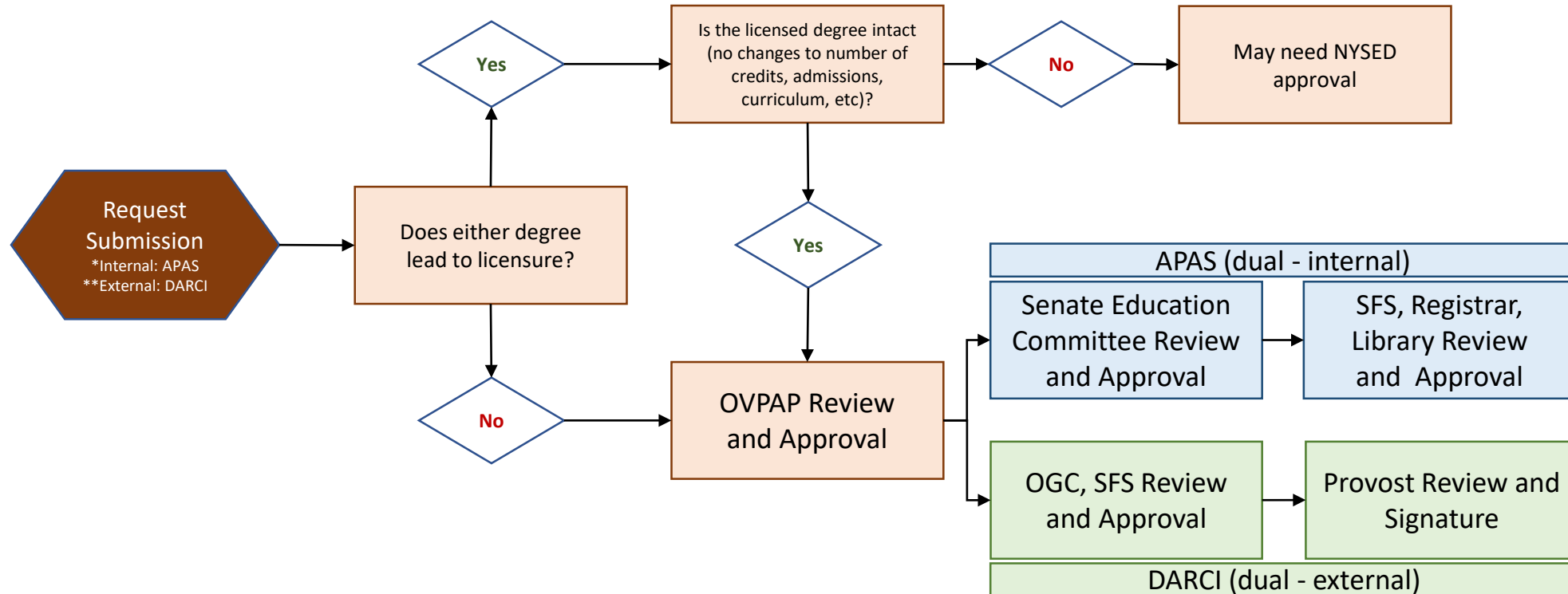


Dual Degree Program: A program in which schools take advantage of two existing degrees, with students completing most or all of the requirements of each, allowing for completion of some requirements through credit sharing. Completion of the program leads to two degrees being awarded, typically with a reduction in tuition and time for students.



*Internal: Two Columbia schools or within a Columbia school. This is referred to as an internal dual degree. Schools should complete a new program proposal form and submit through APAS.

**External: One Columbia school + external institution. This is referred to as an external dual degree. The CU school should submit a dual degree MOU draft through DARCI.